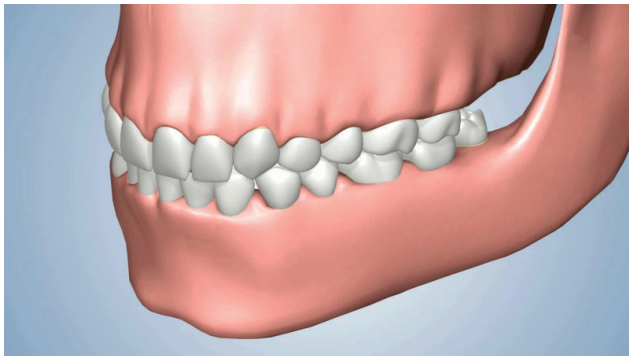
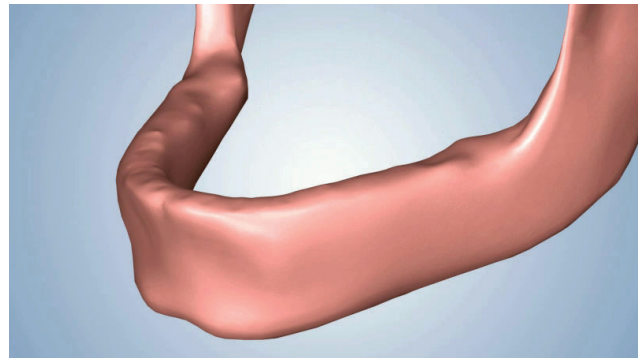


# COMPLETE TOOTH LOSS - CONSEQUENCES OF NON-TREATMENT

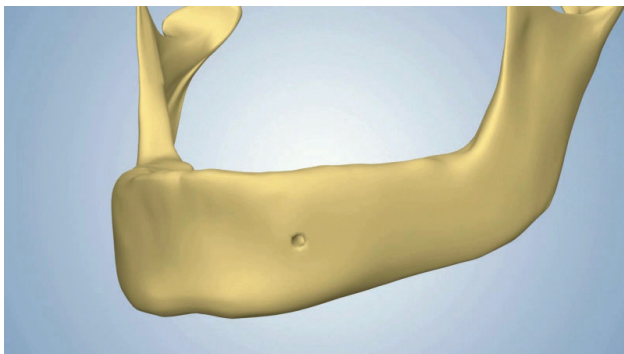
Natural teeth are securely held in place by their roots in the jawbone.



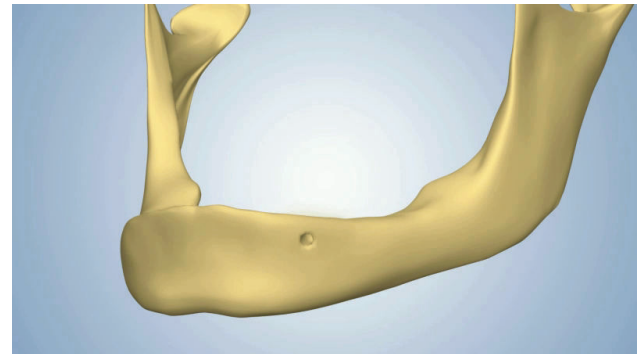
Disease, decay, or trauma may lead to the loss of all ones teeth.



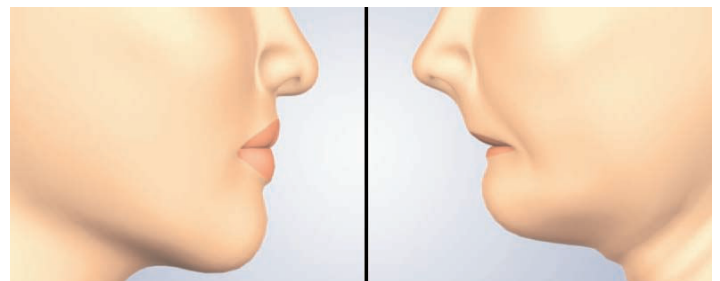
The roots had previously stimulated the surrounding bone, maintaining the jaw's natural shape.



However, with no roots in place the jawbone will begin to resorb or shrink, because it no longer serves the purpose that nature intended.



Many years of bone loss may cause your face to change: your mouth and jaw appear to collapse, your lips look thinner, and there is an increase in wrinkles near the mouth and neck.



In order to avoid suffering these consequences, there are various implant treatments available that closely resemble the characteristics of natural teeth and virtually stop all bone loss.

